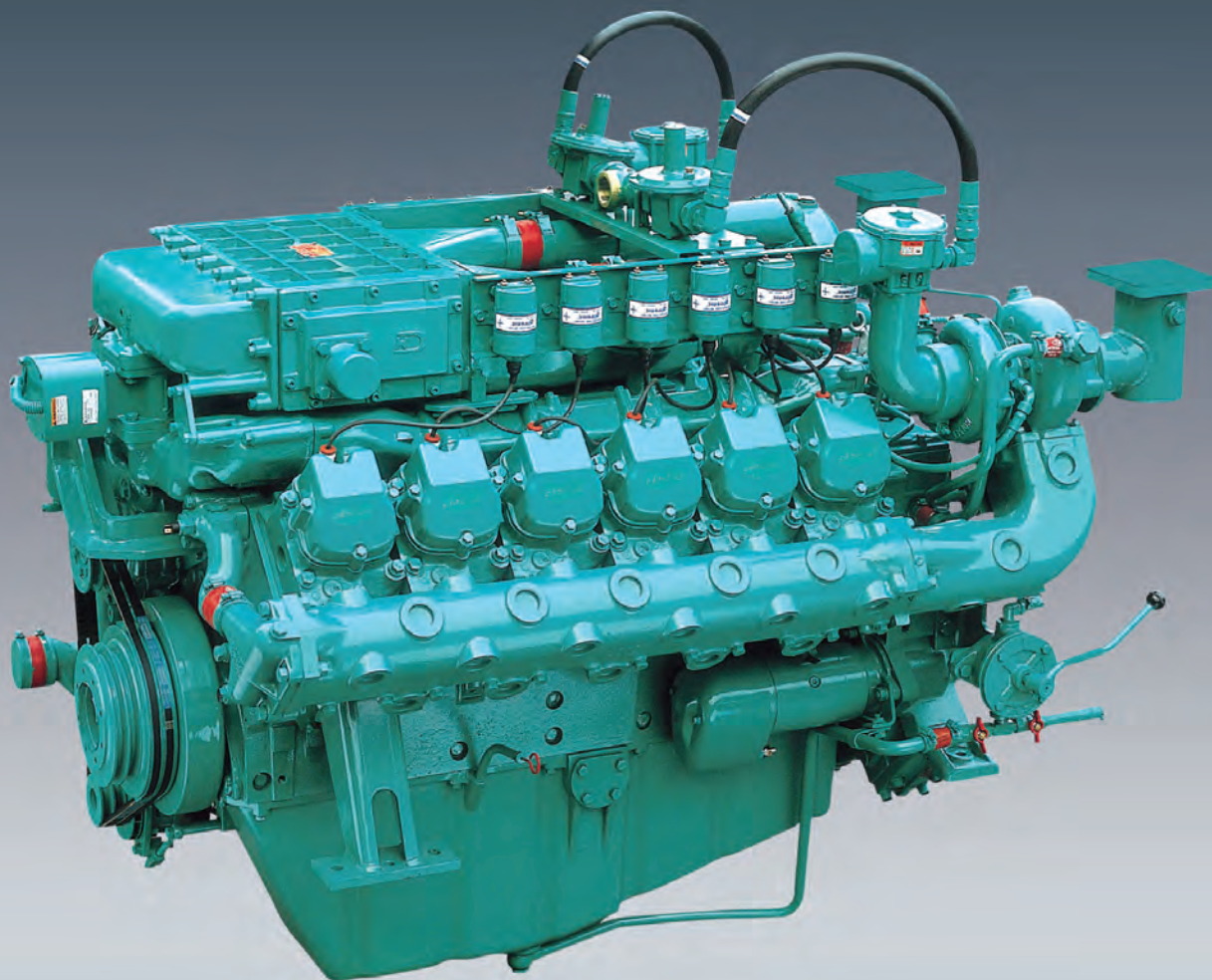


# HYUNDAI



## Natural Gas Engine for Generator 207~520kW



HD Hyundai Infracore Co., Ltd.  
14F, HD Hyundai Group's Global R&D Center, 477,  
Bundangsuseo-ro, Bundang-gu, Seongnam-si,  
Gyeonggi-do, Korea(13553)  
T : +82-32-211-1114 E : [enginesales@hd.com](mailto:enginesales@hd.com)  
[www.hd-hyundaiengine.com](http://www.hd-hyundaiengine.com)



## Natural Gas Engines for Generator

0 40 80 120 160 200 300 400 500 600 700 800 900 (KW)

207~520kW

### Outstanding Performance

HYUNDAI Natural Gas Engines, based on HYUNDAI's diesel engines present high performance even under harsh conditions thanks to proven heavy-duty and advanced fuel system-electric controlled air-gas mixture throttling and ignition system.

### Updated Emissions Compliances

HYUNDAI Natural Gas Engines can meet the stringent US EPA and CARB regulations.

### Beneficial Fuel Efficiency

Optimized fuel combustion enables the excellent fuel economy that customers can benefit from.

### Easy Installation

HYUNDAI Natural Gas Engines deliver an easy installation thanks to Gen-Pack type (radiator, inter cooler, bed frame integrated with engine) and standard Flywheel and Housing. HYUNDAI's Gen-pack minimizes the design changes for installation which able to avoid cost and space impacts.

### 50Hz, 1500 rev/min

Model	Type		Displacement (Liter)	Gross Engine Output			Typical Generator Output					
	No. of Cyl	Aspiration		ESP	PRP	COP	ESP		PRP		COP	
				kWm	kWm	kWm	kWe	kVA	kWe	kVA	kWe	kVA
GV158TI	V8	TI	14.6	253	230	207	223	279	201	251	195	244
GV180TI	V10	TI	18.3	319	290	261	285	356	258	323	245	306
GV222TI	V12	TI	21.9	385	350	315	334	418	301	376	298	373
GV222CA	V12	TI	21.9	405	368	294	363	454	328	410	278	348
GV222CB	V12	TI	21.9	475	444	355	429	536	400	500	335	419

### 60Hz, 1800 rev/min

Model	Type		Displacement (Liter)	Gross Engine Output			Typical Generator Output					
	No. of Cyl	Aspiration		ESP	PRP	COP	ESP		PRP		COP	
				kWm	kWm	kWm	kWe	kVA	kWe	kVA	kWe	kVA
GV158TI	V8	TI	14.6	297	270	243	257	321	231	289	228	285
GV180TI	V10	TI	18.3	374	340	306	329	411	297	371	288	360
GV222TI	V12	TI	21.9	451	410	369	381	476	342	428	349	436
GV222CA	V12	TI	21.9	470	427	342	409	511	369	461	323	404
GV222CB	V12	TI	21.9	520	473	378	456	570	412	515	357	446

COP : Co-Gen Spec, PRP/ESP : Gen-Pack Spec